

## PRACTICE FACILITIES

- ✓ Appointment system
- ✓ Client parking
- ✓ Convenient surgery hours
- ✓ 24 hour emergency service
- ✓ 24 hour nursing care
- ✓ Modern surgical facilities
- ✓ X-ray
- ✓ Qualified nursing staff
- ✓ Acupuncture
- ✓ Ultrasound
- ✓ In-house laboratory
- ✓ Puppy Classes
- ✓ Weight management clinic
- ✓ Nutritional Advisors
- ✓ Microchipping

## CONSULTING TIMES

### Lostwithiel Surgery

☎ 01208 872254

*Monday - Friday:*

10.00 - 12.00 am

2.30 - 3.30 pm

4.30 - 6.30pm

### St Austell Surgery

☎ 01726 68177

*Monday - Friday:*

9.00 - 1.00 pm

2.00 - 6.30pm

*Monday, Tuesday*

*& Wednesday Evenings:*

7.00 - 9.30pm

*Saturday Morning:*

9.30 - 11.30

**24 HOUR  
EMERGENCY  
SERVICE**

## Nurse Clinics and 'Puppy Playgroup'



OUR NURSING TEAM now includes 13 qualified Registered Veterinary Nurses and 6 Student Veterinary Nurses. One of their most important roles is to run our veterinary nurse clinics. The nurse clinics will include weight checks, juvenile health checks, post-op care and removal of sutures, nail clipping, micro-chipping, blood pressure monitoring, behavioural advice, Pet Health Club checks, dental check-ups and dressing changes to name but a few. Full details of our nursing team and our nurse clinics can be found on our website [www.pelynveterinary.co.uk](http://www.pelynveterinary.co.uk)

The nurses also run a "Puppy Playgroup" which has proved very popular over the years with both new puppy owners and the more experienced dog owner. During a three week course of classes various topics are discussed and practical tips and advice available. Worming, de-fleaing, nutrition, training, neutering are all things that are discussed in an informal environment. The puppies have an opportunity to socialise

with other puppies, adults and children, and to also learn early in life that coming to see us at Pelyn Veterinary Group isn't always for nasty things to happen! We are often able to spot previous "Puppy Playgroup" attendees by the way that they bounce into the practice wanting to play. More details are available on our website or just give us a ring for a chat with one of the team.

## Kings Avenue – Surgery expansion

During the Autumn / Winter we will be carrying out an extensive expansion of our St Austell surgery. In fact it may even be finished by the time you get this letter! The most important area we are developing is our reception and customer care area. Using some of the input from our client surveys we will be looking to provide a separate dog and cat waiting area amongst other improvements so thank you to everyone who gave us feedback. We will aim to keep disruption to a minimum and maintain a full service to our clients during this period.

## Going Greener

Our practice manager Renay has recently taken part in the Green Foundation programme, which aims to help local businesses become more sustainable and generally save energy! Through this we have looked at our waste management, energy efficiency and also how we can communicate with our clients in a greener way. As a first step we are trying to increase the number of vaccine reminders and other letters by email. If you are happy to receive communication from us electronically just send us an email to [admin@pelynveterinary.co.uk](mailto:admin@pelynveterinary.co.uk) letting us know. [www.greenfoundation.org.uk](http://www.greenfoundation.org.uk)



Pelyn Veterinary Group now has its own Facebook page, from which we will keep you up to date with news, tips and offers. So just find us as Pelyn Veterinary Group and like our page so we will keep you informed.

# You are what you eat!



We all know the benefits of eating a balanced diet, but did you know that your pet's nutritional requirements actually *change* throughout their lives? The good news is that specially balanced *life-stage* diets are available for every stage of your pet's life, from tiny puppies and kittens, through adulthood and on to old age.

**Puppies and kittens** require a balanced diet with higher (but not excessive) levels of energy, protein for muscle development and essential fatty acids for a healthy shining coat. The correct mineral balance helps bones and joints develop correctly. This is particularly important for large and giant breeds of dog and they have their own specially formulated puppy food.



**Adult pets**, with their major growth phase behind them, require a balanced diet to keep them healthy, but with lower levels of many of the nutrients mentioned above.

**Senior Pets:** As pets become older, their systems become a little less efficient and if they receive too much of a particular nutrient, their bodies will have to work much harder to clear it. Senior foods are specially formulated with this in mind, with lower energy levels to avoid weight gain (as pets become less active), but with altered protein and mineral levels to reduce the workload of internal organs such as the kidneys.

The good news is that feeding your pet a balanced diet, precisely formulated for their particular *life-stage*, plays a very important role in keeping them fit and well. Please ask us for more information and we can help choose the perfect diet for your pet!

## Prescription Diets

In addition to life-stage diets, there are also specially formulated "prescription diets" for pets with specific health problems such as diseases of the kidneys, liver, heart, skin, joints and teeth.

Many of the conditions mentioned above require long term management, and prescription diets can play a very useful role in improving the lives of pets with a variety of conditions.



## Rabbiting on!

Rabbits are very popular as pets, and just as with other pets, need regular vaccinations and health checks to keep them fit and well.

They can be **vaccinated** against two potentially fatal infectious diseases:

- **Myxomatosis** is a viral infection spread by blood sucking insects such as rabbit fleas and mosquitoes. The virus multiplies on the skin leading to blindness and difficulty in eating. Rabbits become very ill and sadly many die from this distressing condition.

- **Viral Haemorrhagic Disease** can be spread *directly* between rabbits or *indirectly*, via contaminated hutches, bedding or food. Symptoms include loss of appetite, nose bleeds, lethargy and sudden death.

Turning to **feeding**, did you know that rabbits have continuously growing teeth? This enables wild rabbits to graze all day on grass and other abrasive foods without wearing out their teeth! Feeding your pet rabbit the correct diet is equally important and should consist mainly of hay and grass, together with a selection of fresh food, and a small amount of good quality commercial rabbit food, with pelleted foods to avoid the problem of selective feeding.

**Shelter:** The winter months can be very challenging for pets that live outside. It is important to ensure that their hutches are warm, dry and clean and have plenty of bedding. Water bottles should be checked regularly to ensure they have not become frozen.

Finally, if you have any questions on caring for your pet rabbit – please ask a member of our practice team!

## Fact File: Ear Disease



Does your pet show signs of head shaking and ear scratching? These are commonly seen in pets and, combined with other symptoms such as ear redness and discharge – point to ear disease as a problem. The ear is protected externally by a pinna (or flap). A narrow ear canal carries sound to the ear drum where it passes onto the middle and inner ear.

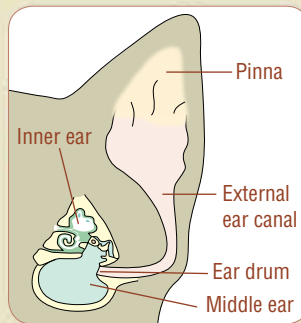
Unlike the situation in humans where middle and inner ear disease is common, most of the problems seen in pets occur in the *external* ear canal – an often very painful condition called otitis externa.

Virtually all otitis externa is triggered by an underlying cause; common underlying causes include: –

- Ear Mite (*Otodectes cynotis*) infestations – commonly seen in puppies and kittens.
- Trapped foreign bodies such as grass awns.
- Localised allergic skin disease affecting the skin lining the external ear canal – often as part of a more generalised skin condition. Inhaled allergies and food allergies will commonly present in this way.

In order to effectively treat ear disease, it is important to determine the *underlying cause* of the problem, however this is often obscured and made worse by *secondary* opportunistic bacterial and fungal infections.

If your pet is showing symptoms of ear disease it is important that we examine them and establish the underlying cause of the problem as soon as we can. This will involve an examination of your pet's ear plus further lab tests in some cases. In common with many conditions, *early diagnosis* and treatment gives us the best chance of curing ear disease in pets.



The ear in cross section. Most ear problems occur in the external ear canal



Otitis externa in a cat with ear mites (*Otodectes cynotis*). The photo shows the characteristic crusty brown discharge in the external ear canal



Electron micrograph of the ear mite – *Otodectes cynotis*

